

FLO-THRU TROFFER INSTALLATION INSTRUCTIONS

WARNING: RISK OF FIRE AND ELECTRIC SHOCK.

THIS PRODUCT MUST BE INSTALLED IN ACCORDANCE WITH THE APPLICABLE INSTALLATION CODE BY A PERSON FAMILIAR WITH THE CONSTRUCTION AND OPERATION OF THE PRODUCT AND THE HAZARDS INVOLVED.

DO NOT INSTALL LAMPS UNTIL INSTALLATION AND ELECTRICAL CONNECTIONS ARE COMPLETE.

STOP

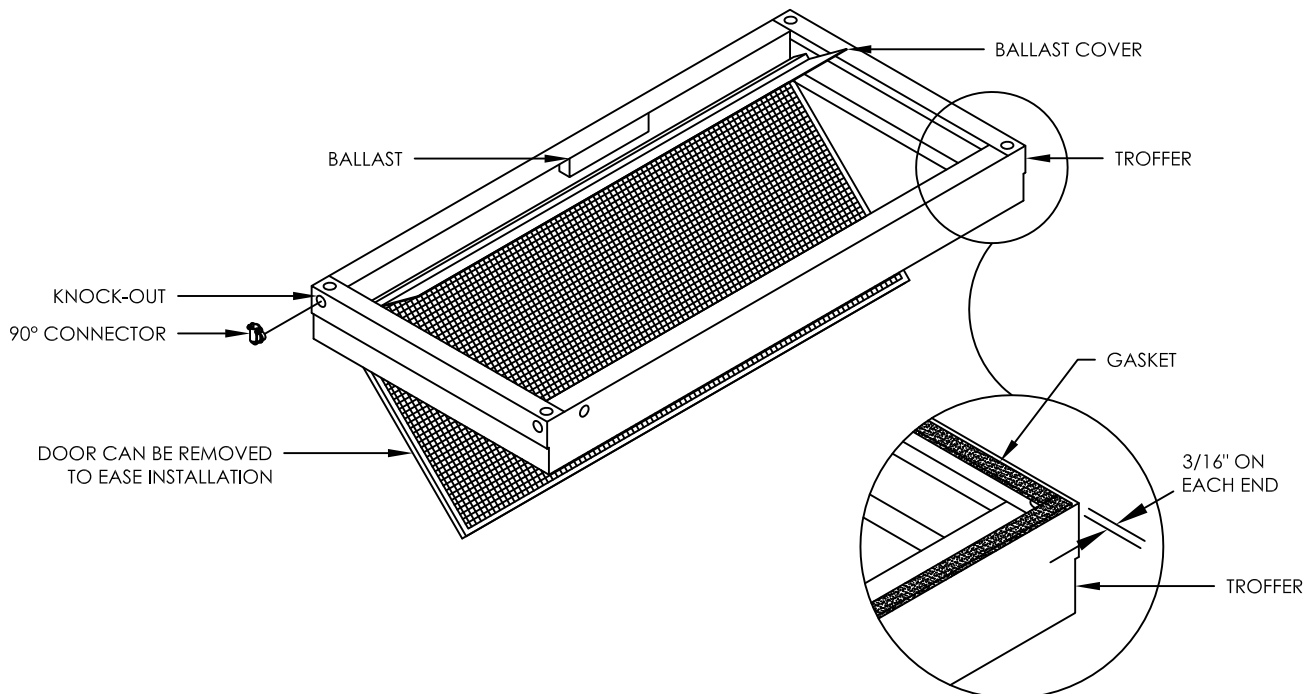
IF YOU ARE INSTALLING THIS TROFFER ON AN RSR OR RSRE FFU, FIRST REMOVE AND DISCARD THE DIFFUSER SCREEN AND INSTALL THE FILTER (REFERENCE THE FFU MANUAL FOR FILTER INSTALLATION.)

STEP 1: PREPARE TROFFER FOR INSTALLATION.

- 1a. Remove troffer from carton.
- 1b. Remove ballast cover.
- 1c. Remove knock-out.
- 1d. Install 90° flex conduit connector in knock-out. (leave connector loose enough to rotate later)
- 1e. Using wires provided, make wiring connections.
 - using push-in connector, connect black to black and white to white
 - using wire nut provide, connect green wire to ballast ground (green wire).
- 1f. Route opposite ends of wires through installed 90° connector.

* DO NOT RE-INSTALL BALLAST COVER AT THIS POINT *

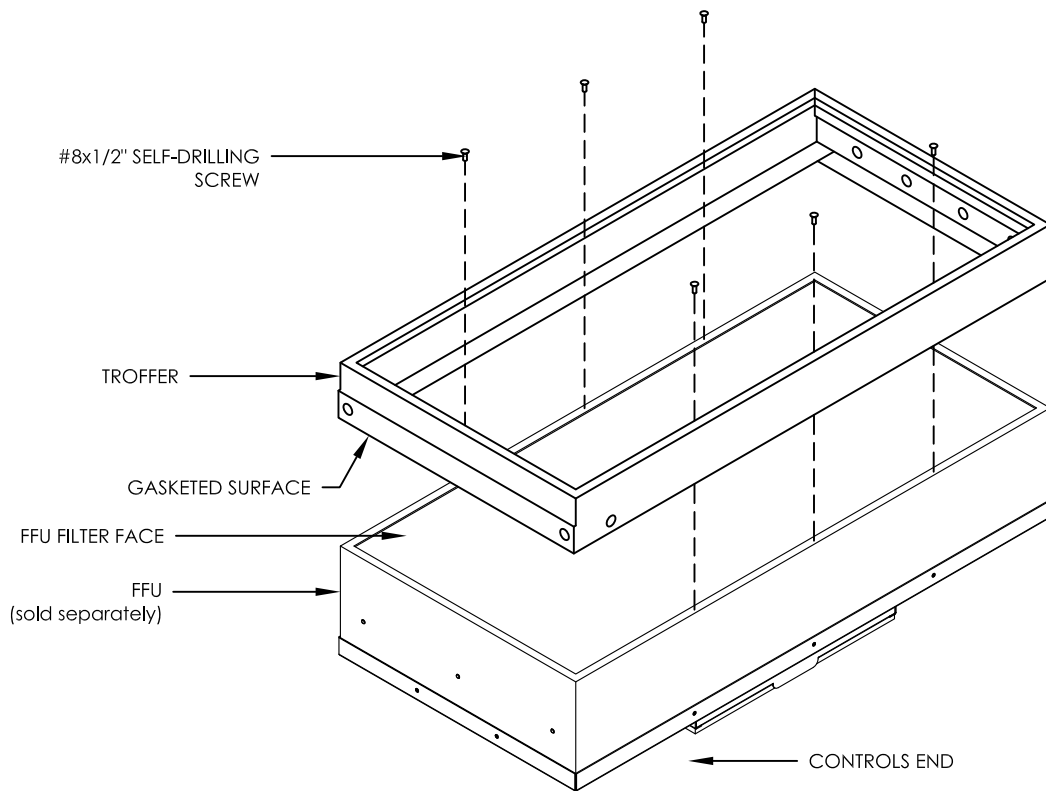
- 1g. Apply gasket provided to perimeter, per drawing, of light fixture surface opposite the egg-crate.



STEP 2: MOUNTING FLO-THRU TROFFER TO FFU.

Caution: Be careful not to pierce the media of the filter. Mis-handling of the FFU and filter may result in filter leaks. Two people may be required to sufficiently handle the weight of the FFU carefully.

- 2a. With FFU upside down (filter side up), align gasketed surface of troffer with FFU filter edges.
(on STD FFU's sides will be flush, troffer will extend 3/16" on each end; on RSR FFU's all sides will be flush)
- 2b. Using the #8x1/2" self-drilling screws, screw thru the troffer and gasket, into the FFU filter frame; approximately 12" on center.
(2x4 FFU = use 3 screws per side; 2x2 FFU = use 2 screws per side)
- 2c. Re-install ballast cover.

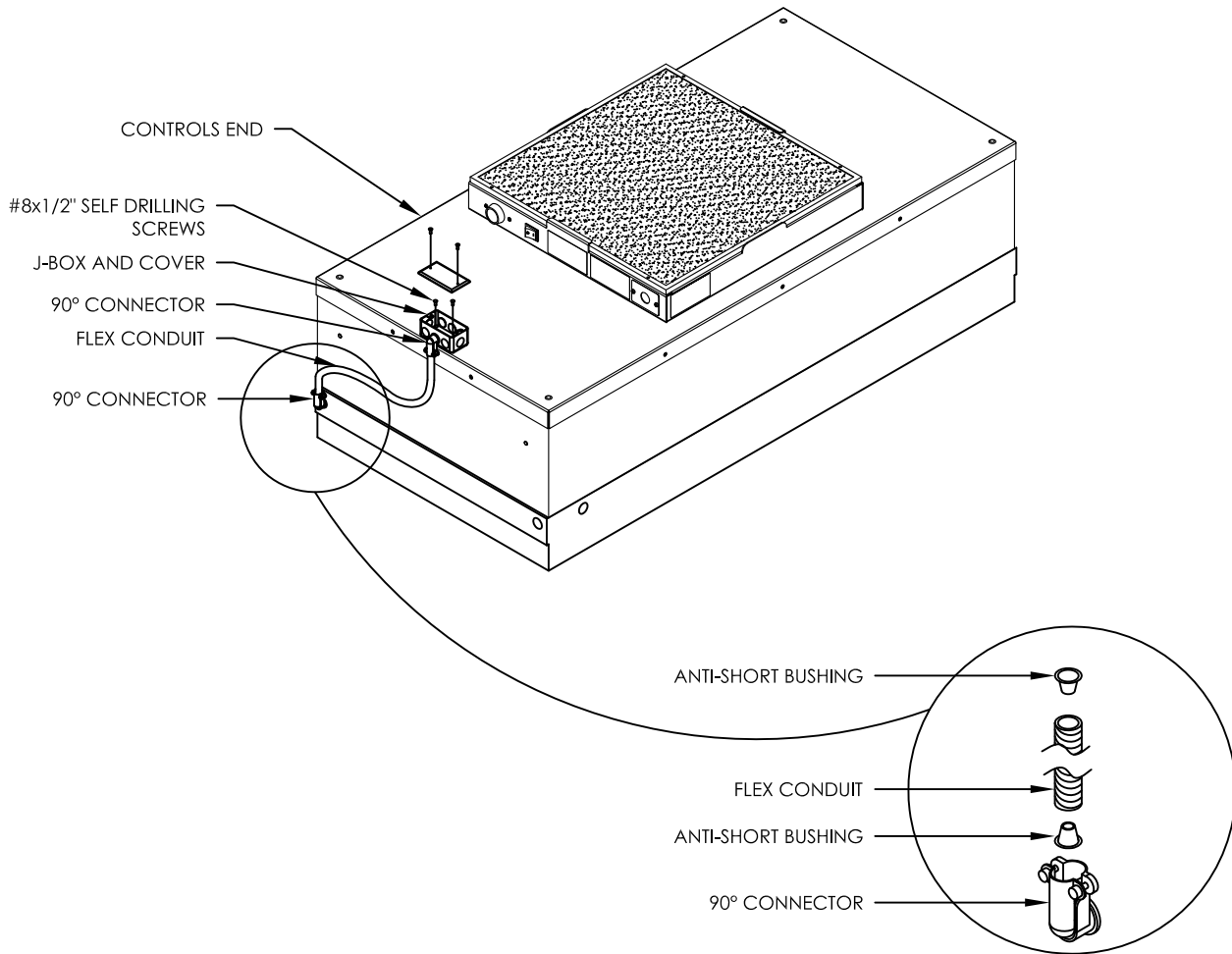


NOTE: 2X4'S SHALL HAVE THE CONDUIT CONNECTION MOUNTED ON THE CONTROL END. 2X2'S SHALL HAVE THE CONDUIT CONNECTION ON THE OPPOSITE END.

(FFU SHOWN IS FOR REFERENCE ONLY, ACTUAL FFU PURCHASED BY CUSTOMER MAY VARY IN SIZE AND CONFIGURATION)

STEP 3: ROUTING WIRES AND INSTALLING J-BOX.

- 3a. With FFU right side up (pre-filter up), install j-box on FFU lid using (2) #8x1/2" self drilling screws as shown.
- 3b. Install 90° connector in j-box (leave connector loose enough to rotate)
- 3c. Cut flex conduit to desired length to make connections between 90° connectors.
- 3d. Install red anti-short bushing into both ends of the flex conduit.
- 3e. Route wires through flex conduit, and into the j-box, secure each end of the flex conduit in the (2) 90° connectors.
- 3f. Tighten conduit nuts on each 90° connector and install j-box cover.



NOTE: 2X4'S SHALL HAVE THE J-BOX MOUNTED ON THE CONTROL END. 2X2'S SHALL HAVE THE J-BOX MOUNTED ON THE OPPOSITE END.

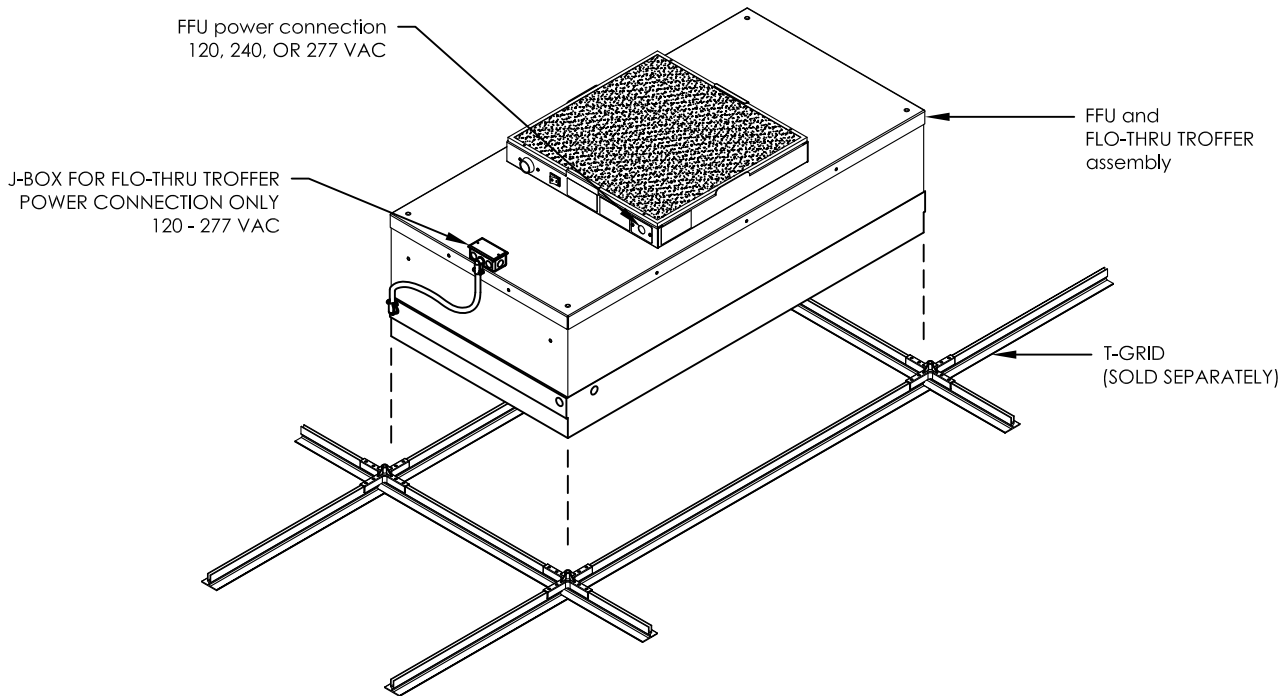
(FFU SHOWN IS FOR REFERENCE ONLY, ACTUAL FFU PURCHASED BY CUSTOMER MAY VARY IN SIZE AND CONFIGURATION)

STEP 4: ASSEMBLY INSTALLATION AND POWER CONNECTIONS.

- 4a. Slide assembly into gasketed t-grid as shown.
- 4b. Flo-thru troffer power connections should be made separate from FFU power connections.

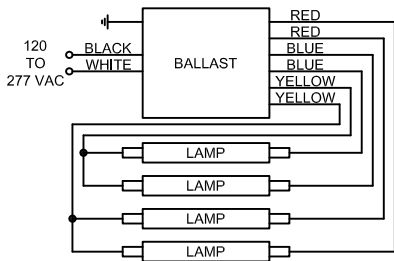
It is highly recommended that a licensed Electrician make final incoming power connections.

DO NOT INSTALL LAMPS UNTIL INSTALLATION AND ELECTRICAL CONNECTIONS ARE COMPLETE.

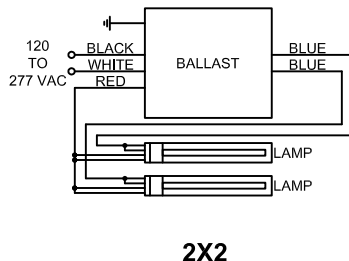


(FFU SHOWN IS FOR REFERENCE ONLY, ACTUAL FFU PURCHASED BY CUSTOMER MAY VARY IN SIZE, VOLTAGE, AND CONFIGURATION)

STD WIRING DIAGRAM

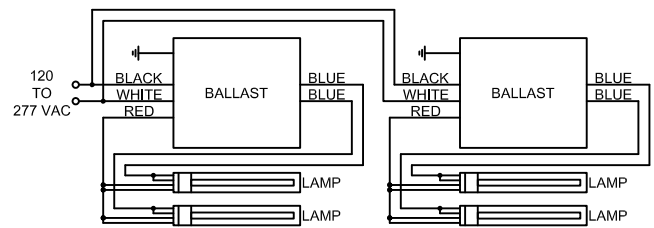


RSR/RSRE WIRING DIAGRAM



2X2

RSR/RSRE WIRING DIAGRAM



2X4

REPLACEMENT LAMPS	ENVIRCO P/N
2X2 STD, 4 PER TROFFER - F017 (T8)	63989-003
2X4 STD, 4 PER TROFFER - F032 (T8)	63989-004
2X2 RSR/RSRE, 2 PER TROFFER - FT36DL	92636
2X4 RSR/RSRE, 4 PER TROFFER - FT36DL	

ENVIRCO U.S. HEADQUARTERS
 101 McNeill Road • Sanford, NC 27330
 tel: (800) 884-0002 / (919) 775-2201
 fax: (800) 458-2379
 info@envirco.com