

MOTOR:
ECM WITH BACKWARD INCLINED WHEEL

- 120V, 50/60 Hz, 1 PHASE, 2.9 FLA
- 208-240V, 50/60 Hz, 1 PHASE, 1.6 FLA
- 277V, 50/60 Hz, 1 PHASE, 1.4 FLA

- FILTER:**
- HEPA 99.99% @ 0.3 MICRON UL900 (MRFH53)**
 - ULPA 99.9995% @ 0.12 MICRON UL900 (MRFU53)
 - OTHER _____

- CONTROL CARD:**
UNIVERSAL CONTROL CARD (UCC)
CONTROL MODES - DIP SWITCH SELECTABLE:
- MANUAL MODE: ONBOARD TRIM POT ADJUSTMENT
 - ANALOG MODE: 0 - 10VDC INPUT
 - NETWORK MODE: MODBUS RTU

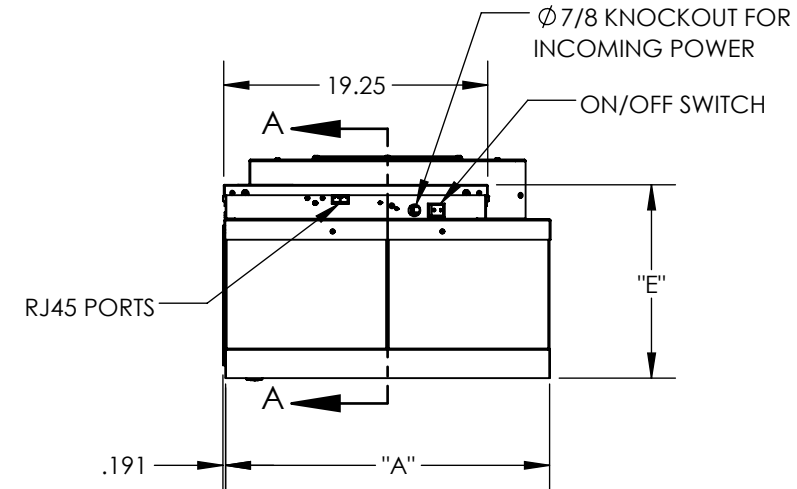
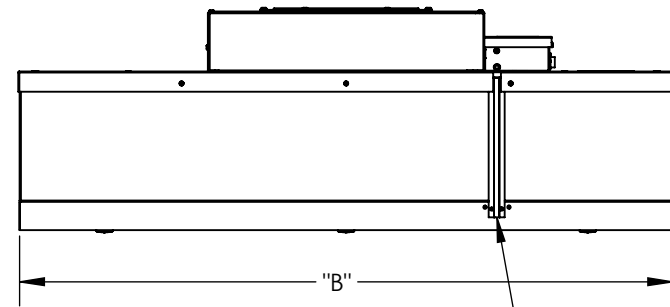
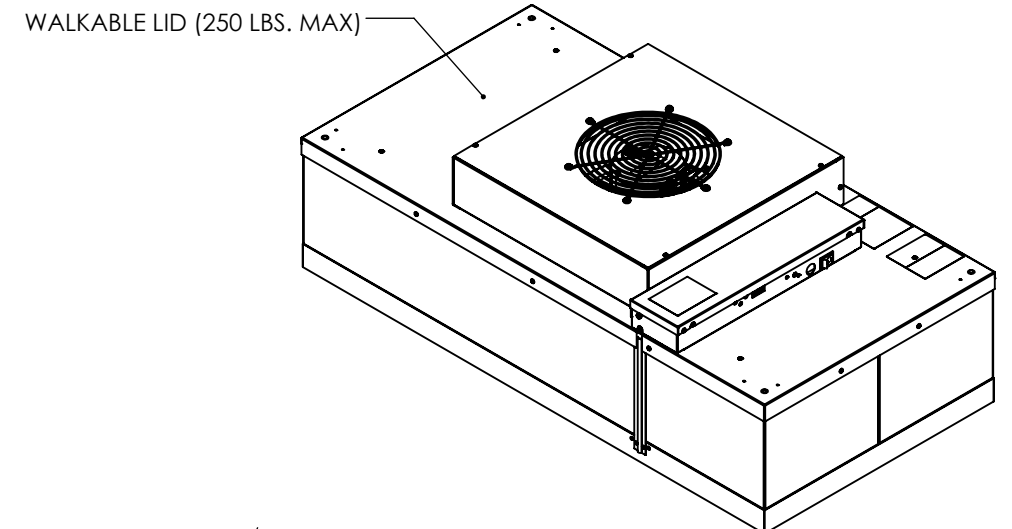
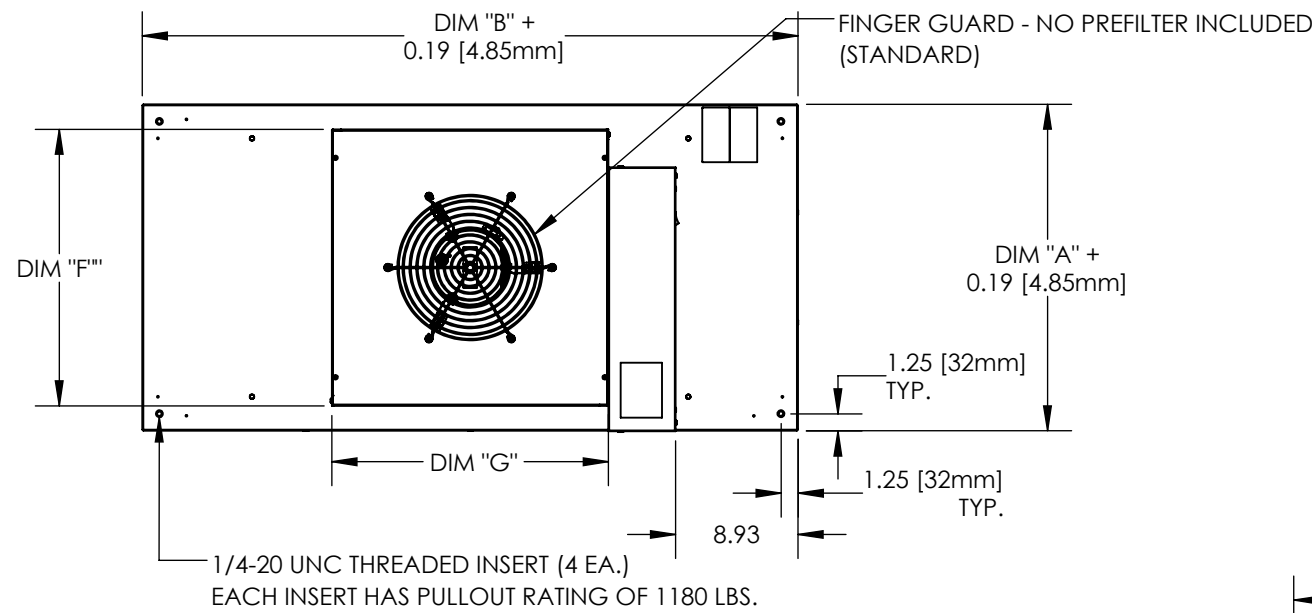
- HOUSING FINISH:**
- MILL FINISH ALUMINUM (M01)**
 - POWDER PAINT - WHITE (M02)
 - 304 STAINLESS STEEL (M304)
[ADD 3/8" TO OVERALL HEIGHT]

- SCREEN FINISH:**
- ANODIZED ALUMINUM (D01)**
 - POWDER COAT PAINT - WHITE (D02)
 - 304 STAINLESS STEEL (D304)

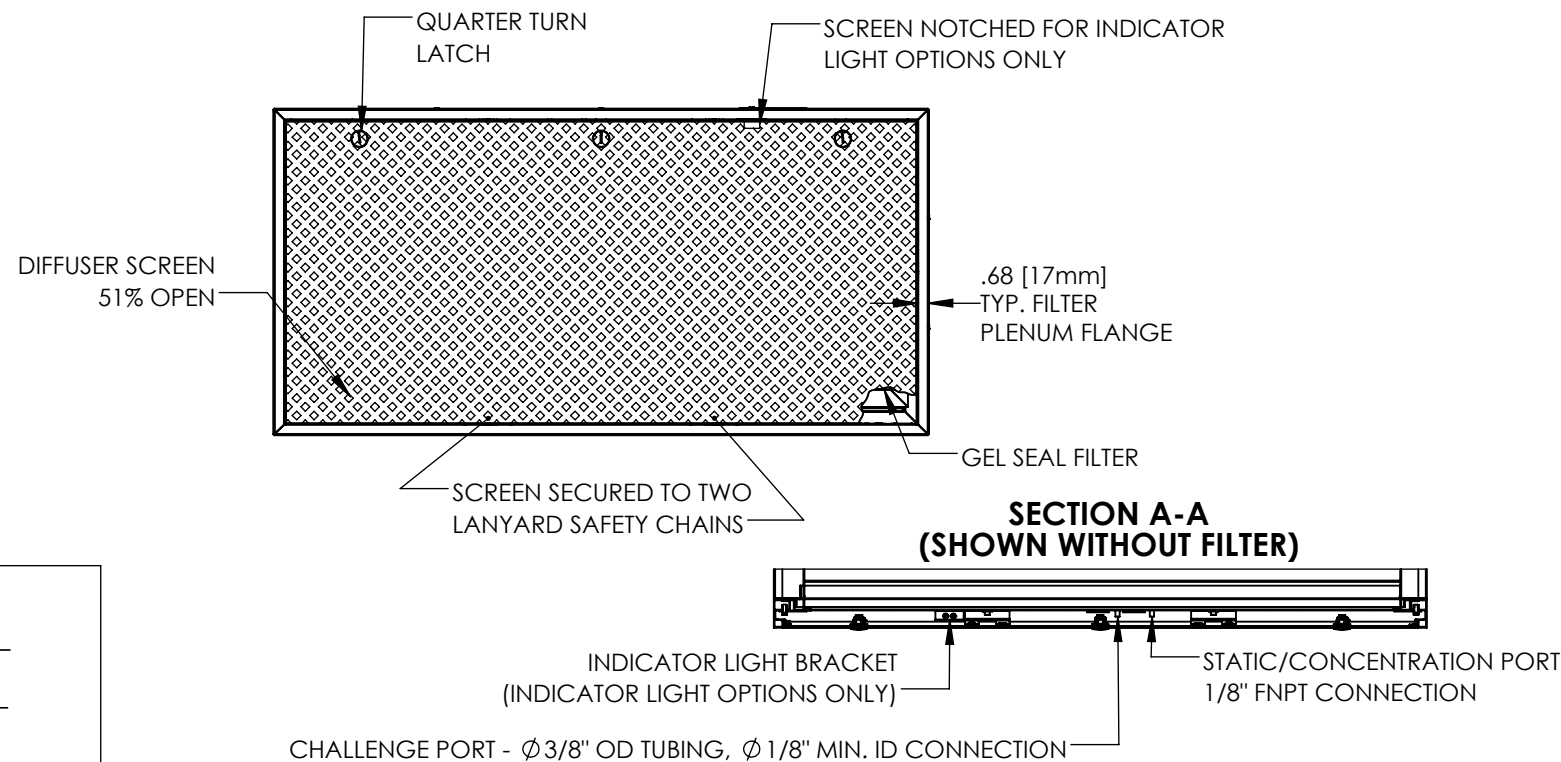
- OPTIONS (SELECT MULTIPLE IF APPLICABLE):**
- MOTOR RUN INDICATOR LIGHT - GREEN (IL)
[ON = MOTOR RUNNING; OFF = MOTOR FAILURE]
 - FILTER LOAD INDICATOR LIGHT - RED (ILFS)
[ON = TIME TO CHANGE FILTER]
 - CONTINUOUS FILTER MONITORING
 - READ 0-10V OUTPUT SIGNAL WITH ATTACHED FLYING LEADS (SPS)
 - READ DIRECTLY FROM MODBUS OF ACC CONSOLE/UCC (SPSC)
 - INSULATION - APPLIED TO UNIT TOP AND SIDES (INS)
 - FILTER SHIPPED SEPARATELY FROM UNIT (FSL)
 - SEISMIC HANGER BRACKETS & SITE SPECIFIC SEISMIC CERTIFICATE
*Additional hardware required, see submittal 8000024

- CERTIFICATION:**
- UL 507 LISTED (E152685)**
 - CE CERTIFIED

NOTE: ITEMS IN **BOLD** DESIGNATE STANDARD OFFERING



PREFILTER BRACKET SIZE (OD)		NOMINAL FILTER SIZE
DIM "F" in (mm)	DIM "G" in (mm)	
20.16 (512)	20.16 (512)	2X4 2X3.5 2X3
20.16 (512)	14.16 (360)	2X2



HOUSING SIZE (OD)		GRID SIZE	NOMINAL FILTER SIZE	APPROX. WEIGHT lbs (kg)
DIM "A" in (mm)	DIM "B" in (mm)			
<input type="checkbox"/> 23.63 (600)	47.63 (1210)	1.5" (S04)	2X4	ALUM: 71 (32) SST: 81 (37)
<input type="checkbox"/> 23.13 (588)	47.13 (1197)	2" (S08)		
<input type="checkbox"/> 23.03 (585)	46.63 (1185)	-	2X3.5	ALUM: 62(28) SST: 72 (33)
<input type="checkbox"/> 23.63 (600)	41.63 (1057)	1.5" (S03)		
<input type="checkbox"/> 23.13 (588)	41.13 (1045)	2" (S07)	2X3	ALUM: 54 (24) SST: 64 (29)
<input type="checkbox"/> 23.03 (585)	40.75 (1035)	-		
<input type="checkbox"/> 23.63 (600)	35.63 (905)	1.5" (S02)	2X2	ALUM: 44 (20) SST: 54 (24)
<input type="checkbox"/> 23.13 (588)	35.13 (892)	2" (S06)		
<input type="checkbox"/> 23.03 (585)	34.84 (885)	-		
<input type="checkbox"/> 23.63 (600)	23.63 (600)	1.5" (S01)		
<input type="checkbox"/>			**OTHER	N/A

** CONTACT ENVIRCO TO ENSURE SIZE AVAILABILITY.

SIGNATURE _____

DATE _____

COMPANY _____

PROJECT _____

P.O. _____

DIMENSIONS ARE IN INCHES		MATERIAL:		ENVIRCO Innovators in clean air technology			MAC10 LEDC - CONSTANT TORQUE RSRC-ROOM-SIDE REMOVABLE FILTER, MOTOR, CONTROL CARD		REV E
TOLERANCES-UNLESS OTHERWISE SPECIFIED				DWG 8000023		SCALE 1:12		SHEET 1/1	
.X OR X/X ±.05	CONC .005 TIR	SHEAR SIZE	SQ FT	U/M	DRN	CJS	ED	DAR	APD
.XX ±.03	BEND RAD: DWG 122223	x			09/24/18	09/24/18	09/24/18		
.XXX ±.015	FINISH: NONE								
ANGULAR ±1°	REMOVE BURRS AND SHARPS								