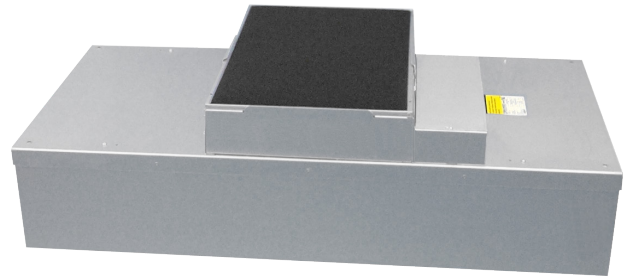


## PRODUCT DATA SHEET

### ■ MAC 10® Original Fan Filter Introduction

#### The Original Fan Filter Unit

The MAC 10® Original fan filter unit (FFU) was the first to combine low sound, lower watts, and a low profile. The MAC 10® Original Standard provides one of the lowest sound levels of any FFU in the industry measuring at 51 dBA. The Original runs at only 310 watts at 90 FPM and uses less energy than older, traditional fan filter units which lowers operating costs. The MAC 10® Original does all this while maintaining a low profile, measuring less than 13" (330 mm).



#### Typical Applications

The MAC 10® Original is primarily used in critical environments requiring clean air solutions. These include clean-rooms, pharmaceutical compounding, semiconductor and microelectronic manufacturing, and healthcare facilities.

#### Multiple Housing Styles

The MAC 10® Original comes in three different style configurations to fit the needs of the clean space.

*STD* - Standard Filter: filter replaced from above ceiling

*RSR* - Roomside Removable Filter: filter replaced from below ceiling

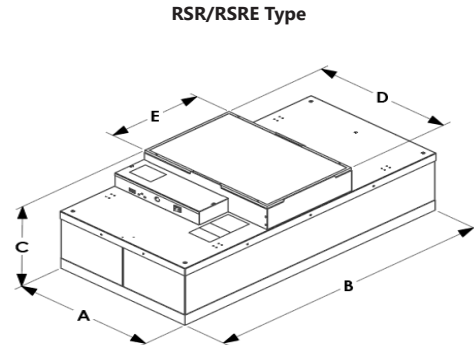
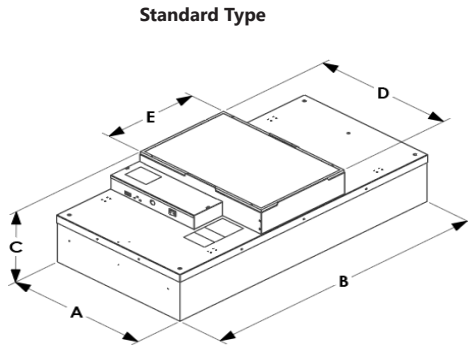
*RSRE* - Roomside Removable Motor and Filter: filter and motor replaced from below ceiling

#### ■ Standard Features

- Solid state speed controller
  - Allows for more fan speed control over three speed switch
- Three Speed Switch which allows for low, medium, and high settings standard on 2X4 Original Standard units.
- HEPA filter: 99.99% efficient @ 0.3 micron, 53mm pleat depth
- Forward-curved centrifugal fan
- Mill finished aluminum exterior
- Walkable plenum (excluding prefilter), rated to 250 lbs.
- Washable MERV 4 pre-filter
- Roomside 3/8" challenge ports for convenient HEPA filter testing (excluding STD)
- Available in 2x2, 2x3, and 2x4 sizes
- UL listed (115V, 208-240V, 277V) with standard UL 900 filter, file number E152685 (UL507)
- Manufactured to IEST recommended practices

#### ■ Optional Features

- Ducted inlet connection (shipped loose)
  - 8" (203 mm)
  - 10" (254 mm)
  - 12" (305 mm)
  - 14" (356 mm)
- Powder coat white paint or stainless steel housing
- CE certified on 230V units
- Filter Efficiencies: HEPA 99.995% or ULPA 99.9995% at MPPS
- Other filter options: PTFE, Energuard, 70mm, 100mm
- 3/4" knife edge: permits easy placement in gel track ceiling grid system (available on RSR, RSRE, and RSRC units only)
- Quarter turn latch screen (available on RSR/E only)
- Indicator light feedback: Unit running and/or filter change indication
- Continuous filter pressure monitoring
- Remote Speed Control option
- Network Control Card option
  - MODBUS RTU
  - Analog speed control
- MERV 8 pre-filter available
- Custom sizes available

**PRODUCT DATA SHEET**
**■ MAC 10® Original Dimensions & Performance**


Nominal Unit Size	Active Filter Face Area (Sq. Ft.)	Min. CFM	Max. CFM	Watts @ Max. CFM	dBa @ Max CFM	CFM @ 90 FPM	Watts @ 90 FPM	Sound dBA @ 90 FPM	Unit Weight	Dimensions AxBxCxDxE (mm)
2x4 Standard	7.2	390	660	315	53	650	310	51	66	23.63" x 47.63" x 12.51" x 23.25" x 16" (600 x 1210 x 318 x 591 x 406)
2x3 Standard	5.3	345	560	270	55	470	240	48	52	23.63" x 35.63" x 12.51" x 23.25" x 16" (600 x 905 x 318 x 591 x 406)
2x2 Standard	3.5	240	410	200	50	315	165	46	41	23.63" x 23.63" x 12.51" x 23.25" x 16" (600 x 600 x 318 x 591 x 406)
2x4 RSR/RSRE	5.3	350	610	300	50	470	245	48	71	23.63" x 47.63" x 14.62" x 23.25" x 16" (600 x 1210 x 371 x 591 x 406)
2x3 RSR/RSRE	3.8	305	500	250	53	340	200	48	54	23.63" x 35.63" x 14.62" x 23.25" x 16" (600 x 905 x 371 x 591 x 406)
2x2 RSR/RSRE	2.3	210	350	170	50	210	140	46	44	23.63" x 23.63" x 14.62" x 23.25" x 16" (600 x 600 x 371 x 591 x 406)

**Notes:**

Performance tested in accordance with the (ANSI/AMCA 210-07), (ANSI/ASHRAE 51-07) test standards for Certified Aerodynamic Performance Rating. Max CFM rating based on free air volumes @ high speed motor setting. 90 fpm values based on active filter face area. BTU = Watts x 3.413

**MAC 10® Original Electrical Info:**

MAC 10® Original 115V 60HZ 1 Phase = 3.3 F.L.A., 208-240V 60HZ 1 Phase = 2.2 F.L.A., 277V 60 HZ 1 Phase = 1.4 F.L.A.

ENVIRCO USA | 101 McNeill Road | Sanford, NC 27330

Tel: 919.775.2201 | Toll Free: 800.884.0002 | Fax: 800.458.2379 | [www.envirco.com](http://www.envirco.com)

© 2021 ENVIRCO®. ENVIRCO® is a registered trademark of Air System Components, Inc. Air System Components, Inc. is a subsidiary of Johnson Controls Inc. All product specifications reflect available information at the printing of this brochure. ENVIRCO® reserves the right to revise or modify products and/or specifications without notice.